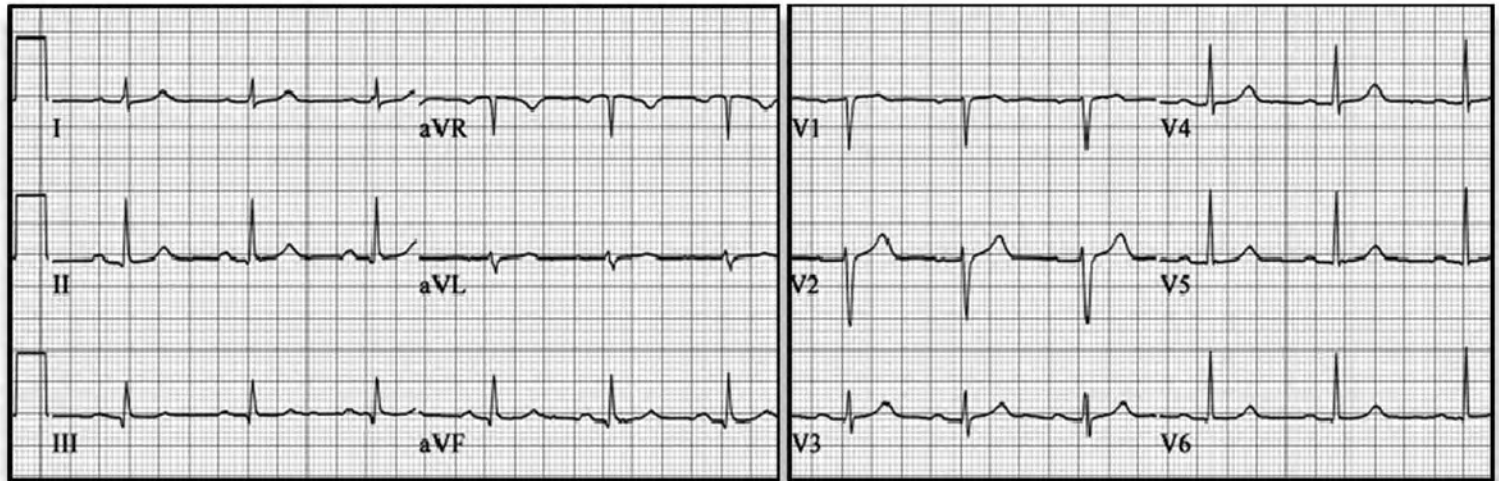


Essential Electrocardiography I - Normal ECG

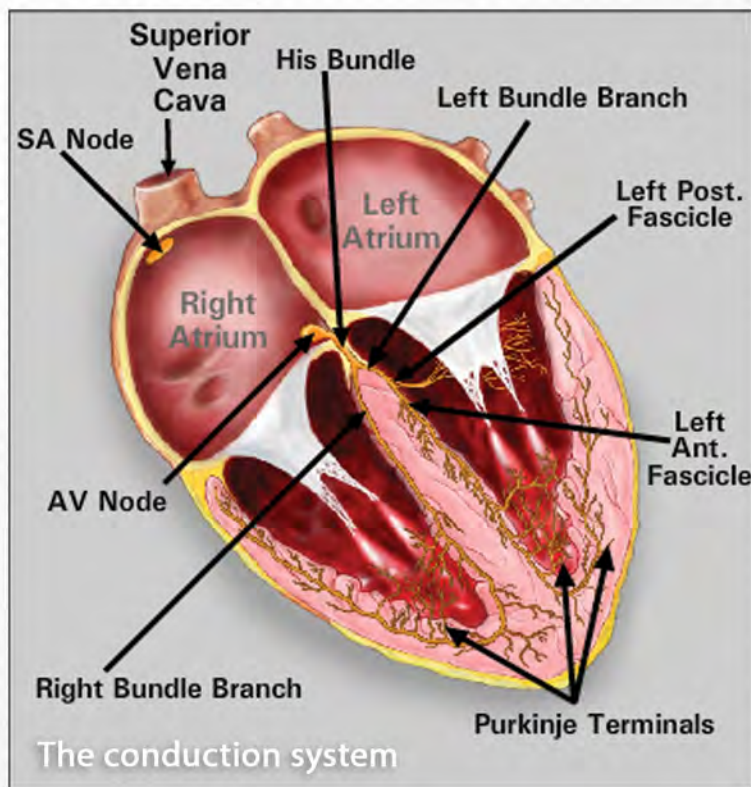
A UMedic e-learning introduction to the normal electrocardiogram



Frontal plane

12-Lead ECG

Horizontal Plane



Features and Advantages

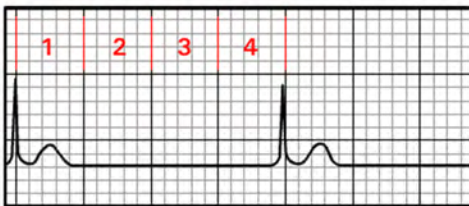
- ✓ Accessible via any internet browser
- ✓ Teaches orderly approach to interpretation
- ✓ Developed by multicenter consortium
- ✓ Incorporates latest curricular design
- ✓ Interactive and engaging
- ✓ Trains students, residents, physicians, physician assistants, nurses and nurse practitioners
- ✓ Saves faculty time

Curriculum

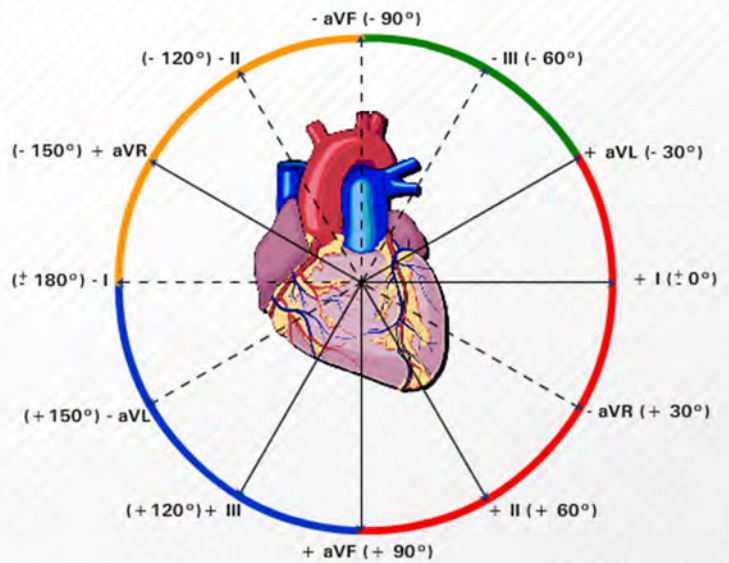
Conduction system
 Grid measurements
 Complex components
 Patient history
 Standardization
 Measuring rate

Sinus rhythm
 Measuring intervals
 Determining axis
 Morphology of complexes
 Principles of interpretation
 Pediatric ECG

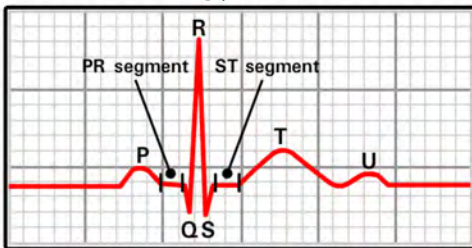
Heart rate



Frontal plane axis



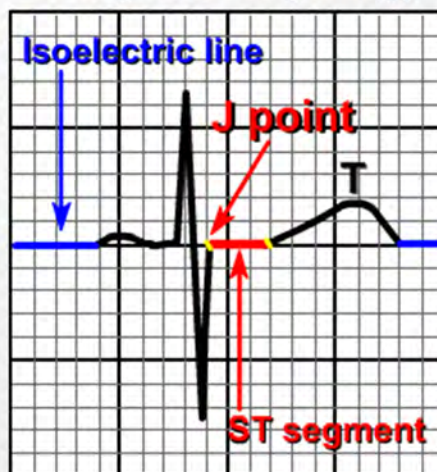
Morphology and intervals



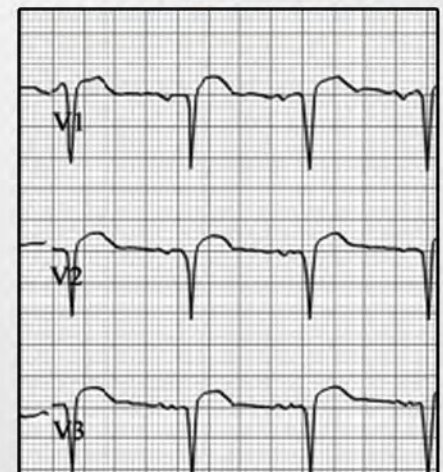
Axis determination

| Axis | Lead I | Lead II | Lead aVF |
|--------|--------|---------|----------|
| Normal | + | + | (+ / -) |
| Left | + | - | - |
| Right | - | + / - | + |

ST segment morphology



Pathologic Q waves



ECG grid

